



**WAYSIDE
CHAPEL**
**ANNUAL
REPORT**
2016/17



CONTENTS

FOREWORD	3	PROGRAM OVERVIEW	10
CHAIR'S REPORT	4	STORIES FROM THE WAYSIDE	12
CEO/PASTOR'S REPORT	5	GENEROSITY	13
MISSION, VISION AND VALUES	6	FINANCIAL REPORT	14
HIGHLIGHTS AND ACHIEVEMENTS	8		



FOREWORD

HIS EXCELLENCY GENERAL
THE HONOURABLE DAVID HURLEY AC DSC (Ret'd)
GOVERNOR OF NEW SOUTH WALES



Message from

His Excellency General The Honourable David Hurley AC DSC (Ret'd) Governor of New South Wales

I am delighted, once again, to write the foreword for Wayside Chapel's Annual Report 2016-2017.

This year brought a new wave of challenges for Wayside, all of which were overcome with patience and tolerance. The staff of Wayside continue to be an inspiration to us all, as they spread their message of 'love over hate' throughout our community.

I have an immense respect for the great work that charitable organisations undertake in Australia. It is the work of non-for-profit organisations that illuminate injustices and uplift the marginalised, the forgotten people of our community. Our community would not be the same without their tireless and unceasing contribution.

It has been a big year for Wayside. In November, Wayside released its second coffee table book, this time aptly titled *Wayside*. Each black-and-white photo, taken by the marvellous Gary Heery, captured the raw beauty of Wayside Chapel. The book launch brought out a great crowd to Wayside Kings Cross, with ambassadors David Wenham, Claudia Karvan and Kylie Kwong in attendance, as well as entrepreneur Dick Smith, designer Camilla Franks and Prime Minister Malcolm Turnbull and Lucy Turnbull. It was a great celebration of everything that is Wayside.

Wayside Chapel welcomed many new faces this year. Among them the first Aboriginal ambassador, Elizabeth Wymarra, was appointed joining the immensely talented group of Wayside ambassadors. Elizabeth has been a long-time supporter of Wayside, growing up just down the road in Woolloomooloo. She will continue to represent Wayside in her charitable contributions to society.

I have seen first-hand the remarkable number of lives touched by the Wayside mission. I recently paid a visit to Wayside Bondi Community Services Centre and was impressed by the progress made over the last year. The front desk is much better equipped to meet visitors and provide them with a warm shower, clean clothing or individualised support. Out the back, the vegetable and herb garden is in full-bloom, providing healthy ingredients for meals. The café is a made-to-order café, with meals costing from 50c to \$2. The Bondi community now has a warm and welcoming haven.

Wayside continues to be vital for our society. As we strive towards a community without the concept of 'us and them', one where a rough sleeper lining up for a shower is just as important as a corporate visitor on an 'Awayside Day', Wayside teaches us all how we should behave to those around us. Every person that comes in the door is a person to be met, rather than a problem to be solved.

Reverend Graham Long, program leaders, staff and volunteers, we thank you for all that you do.

I look forward to another great year, walking side-by-side with Wayside Chapel.

General The Honourable David Hurley AC DSC (Ret'd)
Governor of New South Wales

Government House, Macquarie Street, Sydney NSW 2000
telephone: 02 9228 4111 | website: www.governor.nsw.gov.au



CHAIR'S REPORT

IAN MARTIN AM

CHAIR
WAYSIDE CHAPEL BOARD

As Chairman, I am proud to announce that 2016 - 2017 was another year of significant achievement for Wayside Chapel. We have continued to add to the breadth and depth of our programs, focusing on the marginalised and constantly building a community with no 'us and them'.

In the thirteen years that Reverend Graham Long has been our Pastor and CEO, the extent of Wayside's transformation and record of achievement has been phenomenal.

When Graham joined, Wayside was almost no more. Our building in Kings Cross was a decrepit mess, our programs weren't up to scratch and frankly, the organisation was limping along on memories of its former glory.

Under Graham's inspirational leadership, the contrast is vivid. Wayside's vision of "Love over Hate" and its mission to create a community with no 'us and them', now cuts through to multiple audiences. We operate out of quality buildings in Kings Cross and Bondi with no debt and a solid support base. Most importantly, our programs are demonstrably effective and highly regarded.

Over the last few years, the Wayside Board has amongst many other things been focused on Wayside's sustainability. Not only in an environmental sense, where we strove to create an environmentally friendly building in Kings Cross, but also in an ongoing operational sense. A big part of that has been a focus on generational change and succession planning.

As Graham details in his column in this report, recently he advised the Board that when his current term ends at the end of 2018, he will not be seeking an extension. He has however kindly offered to continue to be involved with the Wayside in whatever capacity makes sense going forward. The Board and I am hopeful that will continue to

see him here for many years in a role that gives him inspiration, joy and a more relaxed lifestyle, which he most certainly deserves at this stage in his life. Perhaps he might be "Pastor Emeritus" or maybe just "Wise Man!"

I acknowledge that transitions of this type are always more than a little daunting. However, I can tell you that this one has been well telegraphed and well planned for.

Of particular note is the fact that Graham has put in place a senior leadership team of highly professional and committed people. Moreover, we have continued to strengthen and enhance that team. For example, in late 2016 Jon Owen joined Wayside as Assistant Pastor and was also appointed Head of People and Culture, and a member of Wayside's Executive Management Team. Reverend Graham Anson continues to be the Pastor at Wayside Bondi.

Over the next few months, the Wayside Board in conjunction with the Uniting Church, will go through a formal selection process to appoint Graham's successor. Obviously, his are big shoes to fill and we will be diligent in our approach and search far and wide, both internally and externally. Our overarching goal will be to ensure that the Wayside's vision and mission remains intact and that our activities continue to grow and develop in a compelling, sensible and methodical way.

Our goal is to make an appointment in time to ensure a period of overlap and smooth transition, when Graham eventually retires at the end of 2018. Watch this space!

Finally, I want to conclude by saying thank you to all of Wayside's various stakeholders: our staff, volunteers, donors, advocates, visitors, ambassadors, our Patron and my fellow directors.



CEO/ PASTOR'S REPORT

REV GRAHAM LONG AM

CEO AND PASTOR
WAYSIDE CHAPEL

Uniting Ministers renew their placements every five years. Currently, I have served for 13 years and my term is due to cease at the end of 2018. After much consideration and with the sincerest belief that the next ten years should be our strongest, I have informed the Board of Wayside and the Uniting Church that I will not be seeking an extension. This is not a sudden decision but the result of consultation and careful planning. Succession is a most difficult matter but given the history and trajectory of Wayside, it is important that we achieve generational change. When I was employed at Wayside, our building was rubble, our finances were at best difficult and we had a handful of staff. We have come so far. With the help of volunteers, staff and our supporters, I believe that now is the time to begin that generational change, to allow the next generation of leaders to take Wayside's mission further and deeper into the community. Succession is important, not just for the sake of Wayside as an organisation, but for the sake of the people we serve and for the people whose humanity flourishes when they get involved with us to create a community of no 'us and them'.

In future, I look forward to supporting Wayside and the new leader in any non-executive way that I can. For the next 12 months, I continue as CEO and Pastor and will give my all to the Wayside community. If you believe as I do that creating a community of no 'us and them' is important, and if you long to see love triumph over hate, you will ensure that this remains the legacy of Wayside long into the future. From 2019, I hope to continue to support, mentor and add value where I can to Wayside.

We embraced an accreditation process this year. Anyone who is familiar with such a process will understand the anxiety and pressure on staff to submit every part of our governance and processes to exacting scrutiny. It is a process that never really ends

but I'm pleased to report that the accrediting body had never marked anyone as highly as Wayside on a first run. Wayside was assessed against the Certificate level of the Australian Service Excellence Standards and achieved a compliance level of 92%. We've also spent our year developing software to empower our front-line workers to collect accurate statistics. It has been a headache over many years to record outcomes and in some circumstances, even record simple items of service. Research blossomed into practice this financial year, as various members of our teams began to use the software. We're hopeful that a day will come when our workers can simply touch an app on their phone to record statistics, with minimum intrusion into the all-important relationship being built with someone who is a person to be met, not a problem to be solved.

Our work with Aboriginal people continues to grow by the month. We have added to staff and volunteer hours and yet we are nowhere near matching the need. This is tough work as our first people suffer in many ways, not least with health problems. An old Aboriginal person is an oddity. We do many funerals for Aboriginal people and we have a growing desire to start a fund for funerals. Few people have the thousands of dollars required to bury their loved one with dignity. The connection of family and of 'mob' is beautifully evident, but to bury a person on their country is an expensive exercise and it continually stretches us and breaks our hearts. We've also found ourselves stretched with an increase of presentations of Aboriginal woman by nearly 30%. Many of these women are dealing with domestic violence and all the complications of being potentially homeless with small children.

It's just over a year since we had a party to celebrate the coming together of Bondi and Kings Cross. We had big plans for the buildings at Bondi, but it seemed prudent to

slow down the pace and re-think. We now plan to bring changes in phases, beginning with a project to bring unemployed young people into the workforce. For years, there was a house in Bondi known as Norman Andrews House and I'm pleased to report that we've successfully built it into a centre like no other in the Eastern Suburbs. We've changed a culture from one of 'charity' to one of 'dignified assistance' for those in need. People gladly pay for food, as we've created a café with a chef, a menu and a wait-staff of volunteers, who believe that all people and especially poor people, need to be treated with respect and with our full attention. It's a fabulous achievement with much more good news to come at Bondi.

I thank our Board; whose careful governance underpins all we do. In particular, I express thanks to our Chair, Ian Martin. Thanks to all our donors, with special mention to Dick Smith, who sold a jet plane this year and gave a generous slice of the proceeds to Wayside. To our other donors - large, medium and small, our love abounds. More than 90% of our income is derived from non-government sources and while it's difficult to predict such giving, it nevertheless forms a special culture at Wayside where we naturally show prudence with every dollar we spend. Thanks to our corporate partners, with special mention of Coca-Cola Australia, who sold the iconic sign in Kings Cross to raise funds for Wayside, and to our wonderful friends at Clayton Utz, whose generosity is the backbone of our work with Aboriginal people. Thanks to the NSW Department of Family and Community Services for funding toward two of our programs and the Federal Department of Health for funding our Day to Day Living program.

Finally, thank you to the most competent and devoted people, our staff and volunteers. The joy of this journey has been and will be, that we share it together.

MISSION, VISION AND VALUES

OUR STRATEGIC FRAMEWORK

As part of Wayside Chapel's strategic development we outlined three key focus areas enabling us to better identify moments of turning, secure the movement of our feet and foster a nimble organisation.

Captured by the Awesome

Pulling people out of their day-to-day routine and catching them with the spark of life.

Prophetic Voice

Calling society back to first principles to recognise that we are hard wired as social beings.

Meeting and Moving

Removing the barriers that separate us so people can be their real selves and moments of connection that can heal us and drive us towards health occur.

These are supported by:

- **Smart Resources:** Effective use of resources across all sections of the business.
- **Diversified Funding:** Ensuring that Wayside has a diverse range of funds to meet current and future needs of the business.
- **Developing Our People:** Investing time and effort into our paid and voluntary workforce to deliver on our commitment to the mission.
- **Innovation:** Continually improving and adopting new ways to solve old challenges.

OUR MISSION

IS CREATING COMMUNITY WITH NO 'US AND THEM'.

Wayside Chapel provides unconditional love, care and support for people on and around the streets of Kings Cross and Bondi Beach.

Wayside Chapel's stated mission is to create community with no 'us and them'. We do this by breaking down the barriers of judgement and providing a safe place where people from all walks of life are welcome just to 'be'.

Wayside Chapel draws people out of social isolation and invites them into the healing place of community. People marginalised by homelessness, mental health issues and addiction can turn to Wayside for compassion, tolerance and support.



It is a vision that is always before us, always out there, always calling us to be more.

Our vision talks about who we want to be, and what we want to foster. We want to live on the intersection between love and hate, the intersection between faith and no faith, between the 'haves' and the 'have nots', the housed and the homeless, the sick and the well. We want to live on this intersection between love and hate, in a way that helps love prevail.

OUR VALUES

OPENNESS (NO SECRETS)

We have a profoundly simple mission, which is to create a community, and our message and work are undiluted with other agendas.

TEAMWORK (NO COWBOYS)

Our goal of creating community is also our method. We work in a collaborative way to invite people out of singular, individual life into the risky and healing place of community.

PATIENCE (NO RUSH)

We cannot make people change. If we could, we'd be guilty of manipulation of some kind. Instead we are on the lookout for sparks of life, signs that people long for better, and we look to engage and help people move to better days and better health.

COURAGE (NO COMPLACENCY)

It takes courage to confront people who've lost hope and invite them into the world of relationships with responsibility. Wayside is not an intensive care unit but an invitation into life and community.

RESPECT (NO JUDGES)

People have the right to make their own decisions. People have the right to make bad decisions. People who choose singular misery or even death deserve to have their rights respected. Wayside's mission is not to fix people but to love them and be with them, knowing that if they are really met, they'll really move toward health and life.



OUR VISION

IS 'LOVE OVER HATE'.

HIGHLIGHTS & ACHIEVEMENTS

2016 – 2017 was all about building, broadening and breaking ground at Wayside. Here are the highlights and achievements from the year.

‘Building’ – when we strengthened our mission within our organisation

- In 2017, Wayside finished renovations at Wayside Bondi Community Services Centre and Café at 77 Roscoe Street, Bondi Beach. The former soup kitchen was transformed into a made-to-order café with kitchen, café and garden that work in synergy. The brand new menu now serves a range of healthy and delicious food, with meals ranging from 50c to \$2. The Bondi garden is also now in full-bloom, with the focus on Indigenous plants and herbs.
- In June 2017, Wayside was proud to announce that we were approved for ASES Accreditation with the amazing result of 92%! After a long journey starting April 2016, our skilled staff were able to bring a successful and gratifying result for Wayside.
- This past year, we’ve welcomed a whole lot of new faces. In October 2016, the well known interior stylist and proud Bondi local Jason Grant joined our list of Wayside Ambassadors. In March 2017, the list grew again with Elizabeth Wymarra, who became Wayside’s first Aboriginal Ambassador.
- Wayside Op Shops provide fashionable, pre-loved clothing to our thrifty community in two locations – Kings Cross and North Bondi. Over the year,



- both Op Shops raised over \$600,000 which all went to helping Wayside’s programs, people and projects, and has donated countless pieces of clothing to those living on the streets.
- Wayside Chapel has inducted 105 new volunteers to both our Kings Cross and Bondi venues.
 - Wayside continued to have great success with our corporate group volunteering days. We had 56 corporate groups come in for an Awayside Day,

with nine new corporates joining this year.

- One of Wayside’s great cross-collaborations was the Café and Day to Day Living programs providing catering for 27 events. Events ranged from a simple morning tea with homemade muffins, to a three-course sit-down dinner for 50 people. The food was prepared by visitors of the Catering Club, under the guidance of the Culinary Manager, Su Harris and the Wayside Caterer, Joanne Tran.

‘Broadening’ – where we expanded our mission into the wider community

- Wayside Chapel released its second coffee-table book *Wayside*, with photography by Gary Heery and words by Reverend Graham Long. The stunning book, full of black-and-white photos of our community, launched with a joyous celebration at Wayside Kings Cross in November. We were joined by ambassadors Kylie Kwong, David Wenham, Claudia Karvan as well as entrepreneur Dick Smith, designer Camilla Franks and Prime Minister Malcolm Turnbull and Lucy Turnbull.
- Wayside celebrated NAIDOC Week in tremendous fashion. The 2016 theme was “Songlines – the living narrative of our nation,” a theme that commemorated the ancestral spirits in the Dreamtime, who ‘sung’ the land into life. The special Mob Lunch saw over 200 people fill our Community Hall, with guests including Governor David Hurley, Dame Marie Bashir, neighbours, visitors and our greater community. During the lunch, Wayside had the pleasure of having Uncle Max perform a traditional smoking ceremony, which is believed to have cleansing properties and ward off bad spirits from the land.
- In September 2016, passionate major donor of Wayside, Rosemary Hannah, hosted a fundraising event for Wayside



at Billy Kwong restaurant, in honour of her 50th birthday. Rosemary booked out the whole restaurant and served her guests delicious food, cooked by Wayside ambassador Kylie Kwong.

- For the first time, we supported a Waterloo Storm Women’s team who participated in the 47th Aboriginal Knockout. It was incredible to empower these women through this period, as many of them have come through addiction and long-term homelessness.
- We had yet another highly successful Christmas Day, with the crowd filling up Hughes Street outside the Chapel. After the morning service, Prime Minister Malcolm Turnbull and his wife Lucy were amongst the guests, helping set up tables for the Christmas Lunch, before serving the food and enjoying

it themselves. It was a wonderful celebration of no ‘us and them’.

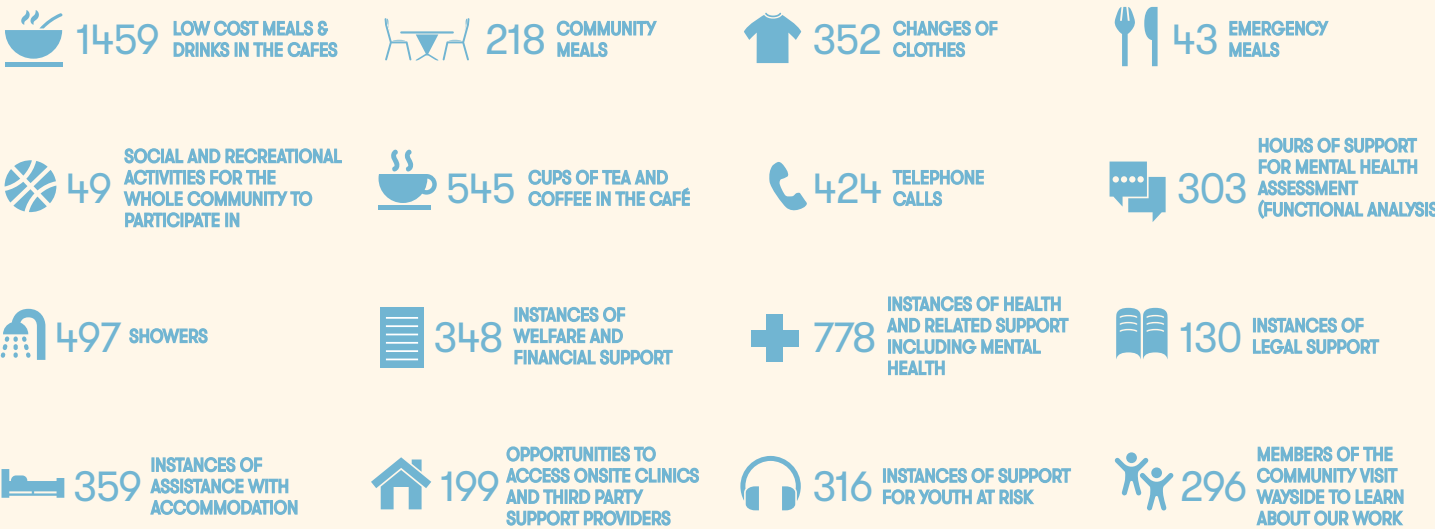
Breaking Ground – where we discovered new ways to spread our mission

- As part of VIVID Sydney 2017, Coca-Cola joined with Wayside to create “Characters of the Cross,” a photography series that became a beautiful moving billboard, next to the iconic Coca-Cola sign. Along with being part of the installation, people were encouraged to donate throughout VIVID to Wayside, with Coca-Cola matching each dollar for dollar. Overall, we raised over \$20,000 together.
- In June 2017, SBS aired the eye-opening three-part series “Filthy Rich and Homeless”, a social experiment which placed five privileged Australians in the

shoes of someone sleeping rough. After the final show, there was a live panel to discuss the issues further, with some of Wayside’s community appearing in the audience and getting a chance to have their say.

- In September 2016, the letters on the iconic Coca-Cola vintage sign in Kings Cross were sold off letter-by-letter in an eBay auction, with all proceeds going to Wayside Chapel. Over \$100,000 was raised from the eight letters in the week-long online auction. The sign, which has stood at the end of William Street for 42 years, was redone and revamped and continues to light up the night.
- During our Annual Winter Appeal, Wayside held a celebratory evening for our supporters that truly brought the Winter Appeal to life. There were 100 people filling our Community Hall on a cold winter’s evening, that included speeches from Philanthropy Manager David Stewart, Community Services Worker John Walters, visitor Josh Macey and Assistant Pastor Jon Owen. All night, guests enjoyed food made by Wayside’s very own Catering Club.
- National Sorry Day was celebrated on 26 May 2017. To commemorate this important day, the Aboriginal Program teamed up with Day to Day Living, and held a Community Lunch, with an Aboriginal film screening afterwards about a group called the “Kinchela Boys”. It was an incredible atmosphere with over 150 people from the community celebrating. We were united as one.
- We delivered 229,727 instances of support and sold 67,097 items in our low cost café.

IN AN AVERAGE WEEK AT WAYSIDE, WE PROVIDE:



PROGRAMS OVERVIEW

COMMUNITY SERVICES CENTRES

Wayside Chapel runs two Community Services Centres (CSC) in the Eastern Suburbs – one in Kings Cross and one in Bondi. The centres are the first point of contact for many people visiting Wayside. Our door is open for all of our neighbours, regardless of their circumstances. People can access referrals for short and long-term crisis accommodation and housing; information and advocacy services; referral services to health and welfare agencies; meeting spaces for self-help and community groups; drop-in activities and practical day-to-day needs like showers and clean clothing. Above all, our CSCs provide a judgment-free space for those just looking for a chat, a coffee or a place where they are welcome just to 'be'. Kings Cross CSC is open seven days a week, while Bondi CSC is open Monday to Friday.



ABORIGINAL PROGRAM

The Aboriginal Program brings the Indigenous community at Wayside together in a way that is culturally sensitive, respectful and appropriate. Our Aboriginal Program Workers engage and support Aboriginal visitors and tailor the project to the needs of the Aboriginal community. The Aboriginal Program offers a structured series of activities including a weekly community lunch, a living skills program and art activities. A series of support programs assist Aboriginal visitors through various pathways including education, employment and referral out of disadvantaged areas. The dedicated Aboriginal space at Wayside enables the Indigenous community to feel a sense of belonging and create their own cultural community.

DAY TO DAY LIVING

The Day to Day Living (D2DL) Program provides people living with long-term mental health issues within a safe and supportive environment. The program aims to support people experiencing social isolation, help them increase community participation, develop confidence and new skills, accomplish personal goals, and improve their quality of life. Through a range of educational, social and recreational group-based activities, participants are encouraged to seek out their vocation, discern what 'recovery' means for them and focus on making their future dreams a reality by creating opportunities for themselves.

TWILIGHT PROGRAM

The Wayside Twilight Team offers fun and interesting activities from 5pm to 10:30pm, a time that can be quite lonely for people sleeping rough or who have a limited network of friends and family. The Twilight Program runs a range of activities, including movie nights; bingo and games nights; photography; music; drama; arts and crafts; and pamper sessions. In addition to activities, the Twilight Team provides a safe place for people to spend the evening and access essential services such as showers, emergency clothing and access to telephone facilities. The Wayside Café also forms part of the Twilight Program and features low-cost, healthy and freshly-cooked meals. Alongside the activities, assessment and support are also provided for people at risk of homelessness or currently homeless, through care coordination.



PATHWAYS PROJECT

When the people we support get back on their feet, the first thing they often want to do is find a vocation that brings meaning to their life. The Pathways Project offers support to people across all program areas at Wayside, whether they're interested in working, studying, or just learning a new skill. Our Pathways Project Officers work with each visitor individually, assessing their vocational goals and developing a unique pathways plan to help building skills toward those goals. It enables our visitors to prioritise their hopes and dreams for the future, and find vocational activities to improve their quality of life. We also work with a range of external partners like Centrelink and employment agencies to bring a more complete set of pathways services to Wayside. Wayside is proud to have employed a significant percentage of supported workers.



WAYSIDE YOUTH

Supporting young people at risk is one of the most important facets of Wayside's work. Inner city continues to be a dangerous place for young people, where the opportunity for criminal activity and the ready access to alcohol and drugs can put them at great risk. Wayside Youth provides a safe and supportive environment for all young people with a particular focus on those living rough in the Kings Cross area. The space provides a drop-in centre with access to showers, laundry facilities and emergency clothing, a breakfast program and a wide variety of fun and educational activities. Care coordination and an outreach StreetReach service ensure young people on the fringes of society are not left behind.



OP SHOPS

Packed to the rafters with clothes, jewellery and kitsch delights, Wayside Op Shops are a favourite of fashionistas looking for quirky one-offs and affordable designs. Dinnigan, Gucci and Ksubi – donated by some of Wayside's very well-dressed supporters – are nestled amongst humbler brand names and handmade items. Wayside is now managing two Op Shops in the Eastern Suburbs, our newer store in North Bondi and our flagship store in Kings Cross. Not only does this allow more space to house all our great stock, it also means more opportunities for sales and increased revenue for Wayside. Our Op Shops generate significant profit for Wayside, which is directed straight back into our program areas to help the most vulnerable members of our community. Patrons of Wayside's Op Shops also know they are 'shopping for good' by buying second-hand, supporting the local community and minimising their environmental footprint.

WAYSIDE GARDENS

As of this year, Wayside is proud to have two gardens – our Rooftop Garden in Kings Cross and our brand new Bondi Garden in Wayside Bondi CSC. In Kings Cross, high up on the roof is a 200 square metre garden filled with over 50 different varieties of organic fruit, herbs and vegetables. It has rainwater tanks, solar panels, worm farms, a compost system and beehives. The Bondi Garden, unlike Kings Cross, is in full view of the kitchen and café and these three parts work in synergy with each other. The organic produce grown in our gardens are used at both Cafés, as well as featuring in local restaurants like Billy Kwong in Potts Point. The gardens now have a stronger focus on Indigenous plants, native saltbush, lemon myrtle and more. The wider purpose of the gardens is to create community, teach living skills, practice sustainability, engage with our neighbours and beautify the space.

THE CHAPEL

Wayside Chapel Kings Cross and Wayside Chapel Bondi are examples of community at its finest, with people from all walks of life coming together for Sunday services. Led by Rev Graham Long in Kings Cross and Rev Graham Anson in Bondi Beach, Wayside church services are something a little bit different, bringing the words of the Lord into a modern context and a community atmosphere. The sermons touch on everything from grief, addiction and despair to love, hope and renewal. The congregation enjoys each other's company every Sunday and are reminded that all of religion is satisfied when love is lived in community.



STORIES *from the Wayside*



“When I come here I am treated with dignity and respect. Being able to come here and have a shower and wash my clothes stops me from slipping into despair. Feeling clean and having something to eat makes all the difference.”

Jim



“I discover this wonderful place. Immediately people from the office, people who attend here, come to me. I have suddenly friends. Never knew them before. Don't know how long I will be in touch with them. The wonderful sense of friendship takes me over... We are guided here, provided here.”

C.M.H.



“I absolutely love Gardening with Jon. I've learnt so many things – how tiger worms interact with the soil, how to grow all different varieties of vegetables and the nutrients in each one. I've just done my first day studying horticulture at TAFE, fusing my previous background of landscaping with this new knowledge and my love of the garden.”

Rodney



“There's always something interesting on at Twilight but mostly, it's just helpful to having somewhere to go at that time of day. At Wayside, you don't have to have any money and you don't have to be part of a club and people are often very friendly.”

Stephen



“Wayside's changed me a lot and my story has changed a lot of workers. The community and Youth group are like family to me. From day one, they have never been judgmental. They organised community care plans, liaised with my social worker and always been a huge support, even checking in on me when I was in hospital.”

Emma



“Being here, in the Aboriginal space, with the community and the support workers around me, Wayside has kept me alive. I love the atmosphere, the friendliness and when I'm here I feel happy, relaxed, calm and totally in the head space I need to be in.”

Lani



GENEROSITY

Wayside Chapel would like to thank all our partners who support us in the important work that we do.



The taste the world loves!®



Norwest



CLAYTON UTZ

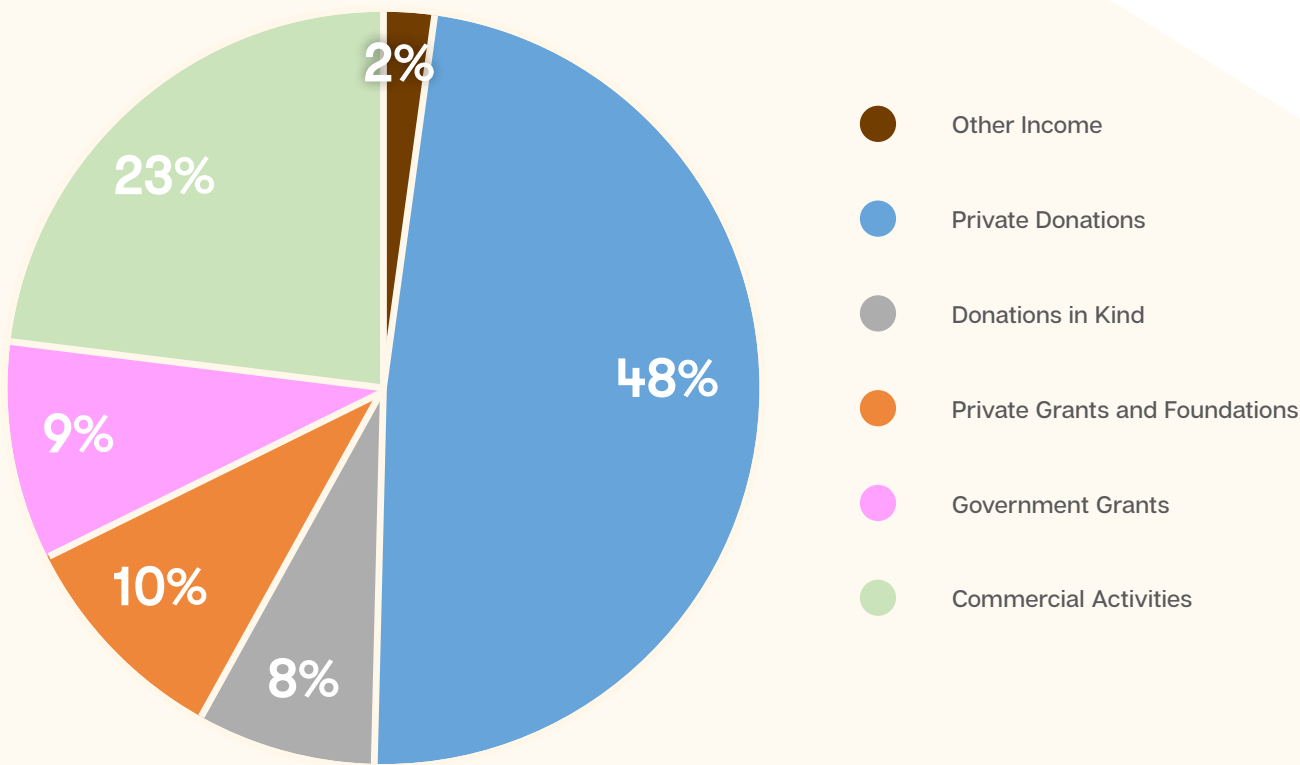
FINANCIAL REPORT

Through the continued generous support of the community, Wayside experienced strong growth in 2016-17.

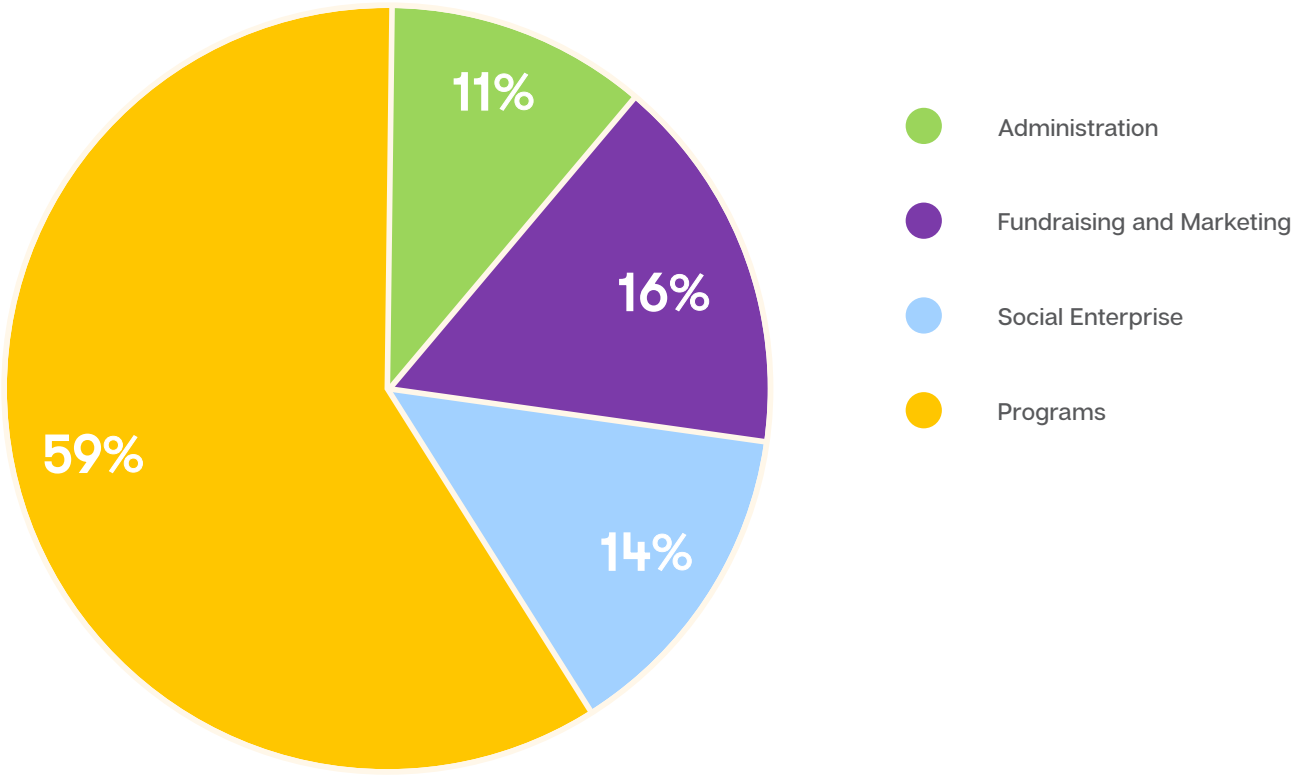
INCOME STATEMENT	2016-2017 \$'000	2015-2016 \$'000
REVENUE	6,843	5,325
EXPENSES	6,267	5,315
NET SURPLUS \$	576	10
NET SURPLUS %	8.42%	0.19%

The operating surplus is the result of a higher level of bequests being gifted in the 2016-2017 financial year.

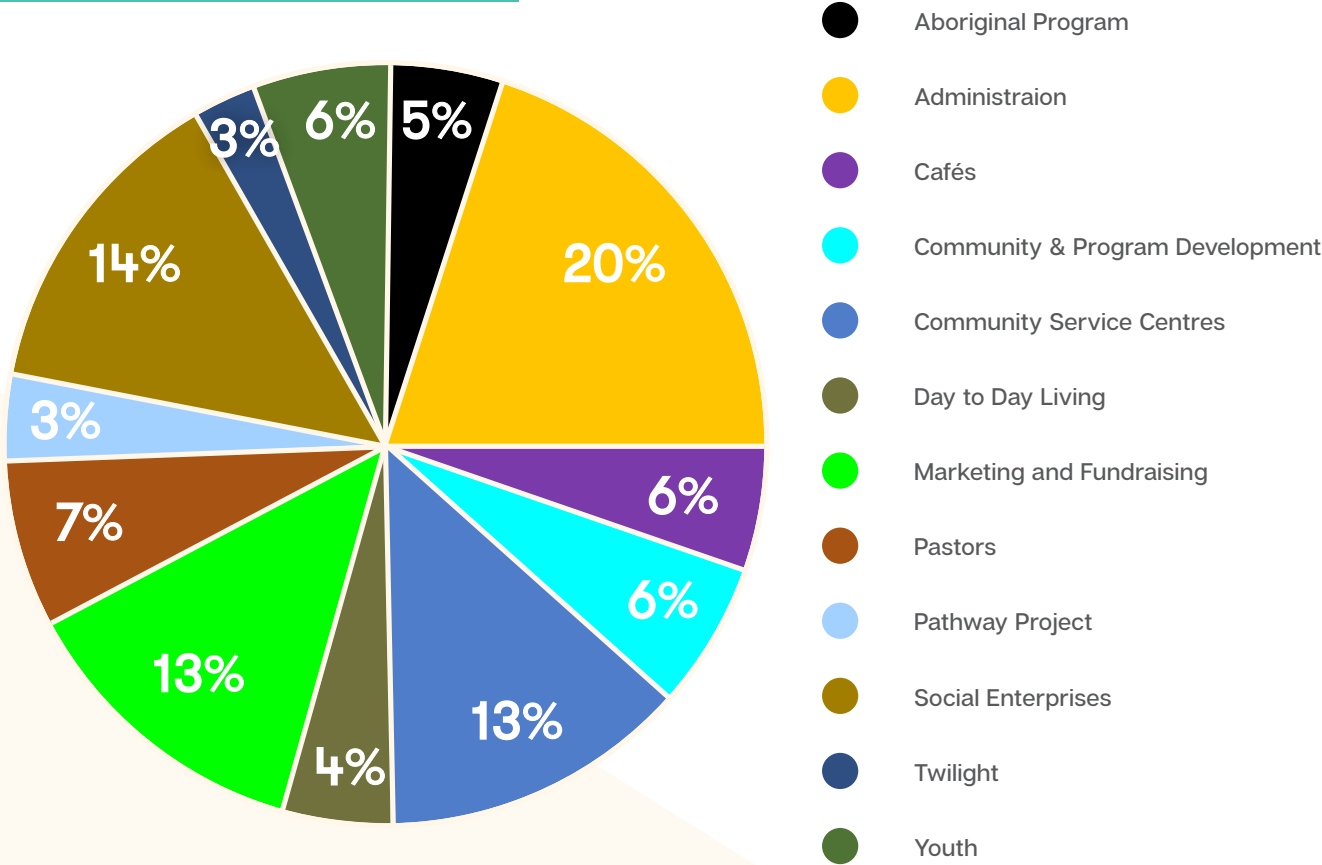
REVENUE BY FUNDING SOURCE



WHERE DO WAYSIDE'S EXPENSES GO?



WAYSIDE STAFF COSTS BY PROGRAM



THANK YOU

Wayside Chapel would like to thank all of the individuals, groups and businesses that support us in the important work that we do.



29 Hughes Street, Potts Point NSW 2011
77 & 95 Roscoe Street, Bondi Beach NSW 2026
mail@thewaysidechapel.com 02 9581 9100
www.waysidechapel.org.au

Photos by Katherine Williams