



**WAYSIDE  
CHAPEL**  
**ANNUAL  
REPORT**  
2017/18





# CONTENTS

FOREWORD	3	PROGRAM OVERVIEW	10
CHAIR'S REPORT	4	STORIES FROM THE WAYSIDE	12
CEO/PASTOR'S REPORT	5	GENEROSITY	13
MISSION, VISION AND VALUES	6	FINANCIAL REPORT	14
HIGHLIGHTS AND ACHIEVEMENTS	8		



## FOREWORD

HIS EXCELLENCY GENERAL  
THE HONOURABLE DAVID HURLEY AC DSC (Ret'd)  
GOVERNOR OF NEW SOUTH WALES



Message from

### His Excellency General The Honourable David Hurley AC DSC (Ret'd) Governor of New South Wales

It is with much gratitude that I write the foreword for Wayside Chapel's Annual Report for the last financial year. This is my third year in the role of Patron for the Wayside Chapel and I have been astounded at the leaps and bounds they have made.

The announcement in March this year that not only had Jon Owen been chosen to be the new CEO and Pastor of Wayside Chapel, but also that Reverend Graham Long AM will stay at Wayside in the role of Pastor Emeritus, brought me much joy. As CEO and Pastor, Graham gave 14 inspiring years of service to Wayside Chapel, which will continue in his new 'grandfather' style role, mentoring and guiding Jon and our community. Graham left an important legacy, which I have full faith will be carried forward into the future.

I find Jon to be the perfect fit for CEO and Pastor for the Wayside of the future. He has devoted his life to supporting marginalised communities and attempting to reduce the cycle of poverty. He has truly lived the Wayside mission and I look forward to watching him grow as our new CEO and Pastor.

The last year has been a year of tremendous growth for Wayside Chapel. They grew in staff to over 100 people and have also been able to reach into new parts of the wider community in many diverse ways.

I also anticipate some brilliant things to come for Wayside Chapel. Wayside's new social enterprise youth project, the Heart Café opens in November. The Heart Café will serve quality, fresh food in the heart of Bondi Beach, but will also support young people stuck in the relentless cycle of unemployment by offering paid traineeships in hospitality.

Wayside's program areas have continued to make great strides. The Aboriginal Program have had an increase of visitors using their services and their famous Wednesday Mob Lunch. Wayside was also proud to announce this year that they have been granted two more years of funding for their Extended Hours Program, keeping doors open until 10:30pm at night, seven days a week. The Twilight Team has continued to impress, adapting to these hours and organising social activities to entertain and bring visitors together.

There are moments at Wayside Chapel every day that astound and show the beauty of their mission, vision and values. It is truly an essential part of our community and I thank all the people who contribute in many ways, to allow Wayside Chapel to keep their doors open. Without you, Wayside Chapel would not be able to keep spreading their vision of 'love over hate' in this complicated world we live in.

I look forward to another exemplary year for Wayside Chapel and all the amazing achievements we will make together as a community.

General The Honourable David Hurley AC DSC (Ret'd)  
Governor of New South Wales

Government House, Macquarie Street, Sydney NSW 2000  
telephone: 02 9228 4111 | website: [www.governor.nsw.gov.au](http://www.governor.nsw.gov.au)





# CHAIR'S REPORT

## IAN MARTIN AM

CHAIR  
WAYSIDE CHAPEL BOARD

Once again, as Wayside's Chairman I am proud to announce that 2017-2018 was another year of great achievement on all fronts, but by far the most significant was the Pastor/CEO leadership transition from Rev Graham Long to Jon Owen.

In any organisation leadership transitions are always fraught with anxiety: how will the new person compare with his predecessor; what will change; will the organisation somehow be different; will its values stay the same; how will our various stakeholders respond? And in a values-based organisation like Wayside which is crucially dependent on the ongoing support of donors and volunteers if anything these anxieties are naturally heightened.

Graham's contribution to the Wayside has been enormous. When he arrived 14 years ago, Wayside had fallen on hard times; its finances were in dire straits; its building was falling down and much of it condemned and, while still respected for the quality of its mission and social programs, they were suffering from the financial and physical constraints the organisation found itself confronting. The contrast with today could not be more dramatic.

In recognition of these issues and the responsibilities it was shouldering, to ensure a successful transition on Graham's retirement, the Board embarked on a formal and extensive search process. We worked with the Sydney Presbytery of the Uniting Church and engaged the respected Sydney-based recruitment firm Hattonneale to assist in making sure that we left no stone unturned as we sought to find another unique leader who could drive Wayside forward in a manner that respected its history, vision of "love over hate" and mission of creating community with no "us and them". In that respect, I particularly want to thank my board colleagues Graham Rich and Rev Kent Crawford for the leadership role they played in the recruitment process.

Enter Pastor Jon Owen! Like Graham Long, Jon Owen is "the real deal". Having spent 20 years building community in some of the most disadvantaged neighbourhoods in Melbourne and Sydney, he genuinely cares about the socially marginalised and is able to connect with people from all walks of life. Jon lives and breathes the Wayside mission and has the rare combination of experience, vision and heart. Jon joined the Wayside in late 2016 as Assistant Pastor and has had the benefit of being Graham's understudy until he formally took over on 1 July 2018.

The Board is confident that Jon will lead the organisation forward to even bigger and better things, and all of us look forward to working with him as he does so. In that respect, our immediate focus is on the opening of our new social enterprise in Bondi, the Heart Café, which in conjunction with The Wingspan Project will provide employment pathways for marginalised youth.

We are also delighted that Graham Long continues in the role of Pastor Emeritus, or as Graham prefers to call it "Wayside's grandfather".

Finally, I'd like to once again thank all Wayside's various stakeholders, our staff, our volunteers, our donors, my fellow board members and, of course, our visitors.



# CEO/ PASTOR'S REPORT

## REV GRAHAM LONG AM

OUTGOING CEO AND  
PASTOR WAYSIDE CHAPEL

From one angle, a duck seems to glide on its path with grace and ease. From the view under the water, little legs move furiously to make such graceful progress possible. I hope in the view of the majority, Wayside appears to move toward its destiny with grace. The view from under the surface however is a story of unrelenting activity.

This year has been dominated by the succession plan for the role of CEO and Pastor. The end result was the appointment of Pastor Jon Owen as my successor, effective from the 1 July 2018. The unanimous decision of the Board won the support of the Uniting Church and the

various processes worked to make the appointment in the prescribed time frame. I report universal optimism from Board, staff, volunteers, donors and the wider community for a strong future for Wayside.

Although succession dominated, it has been a busy and fruitful year. After a growing camp of homeless people established a prominent presence in Martin Place, the NSW Government pulled out all the stops to engage with every person in the camp and to provide housing where possible. Among the outcomes of this experience was a request that Wayside extend its opening hours to 10:30pm each night. I can report that the trial proved both to the NSW Government and to Wayside that the extended hours were a fruitful investment for the sake of reaching those who are newly homeless and those for whom few services exist in the late evening. I can also report that the results are so impressive that the arrangement has been extended for two years. I'd like to thank the Minister for Family and Community Services Pru Goward, in particular, for leadership and compassion that has been truly inspiring.

As I write, the builders are in Bondi, constructing our new Heart Café in our premises on Roscoe Street. It's quite a leap for Wayside to run a commercial café in the middle of "café central" Bondi Beach, but the heart of the project is to employ seven long-term unemployed young people and train them in a full, twelve-month program that will make them employable in hospitality at any level. The large investment into buildings and equipment is matched by a complete rework of our youth program, now called The Wingspan Project which will be totally dedicated to helping young people maintain employment.

Each year our Aboriginal Program grows in its depth and reach. This year we held our NAIDOC week celebrations in our building to capacity, which birthed discussions on how we can move this important event to a larger public place for the wider community. We recognise our Aboriginal people at all our meetings and as a community we know that we can truly say that we love this land, when we love the people of the land.

The growth of Wayside is only made possible because of the generosity of our supporters. This year, people across Sydney, Australia and even the world, made financial contributions that were nothing short of inspiring, especially in a year of transition in leadership. To the people who gave generously to our appeals, our Donate a Plate campaign, and our regular giving campaign, I thank you. To the many corporate organisations, foundations and individuals who invested significantly in our mission, I thank you.

At the end of this year on 30 June 2018, I'll cease to be the CEO/Pastor and will move to a new role that we're calling Pastor Emeritus or more probably, "Grandfather". As a grandfather is someone whose presence is respected and whose advice is normally ignored, I think I'll relish and thrive in this new role. I'm keen to do all I can to help our new leader flourish. For the next three years as Grandfather, I'll add value with any wisdom, teaching, guiding, pastoral duties, preaching on Sundays or anything else that eases the load on our new leader. In what is my final report as CEO and Pastor, I offer my deep thanks to our Board and particularly to our Chair, Ian Martin AM, for the masterly way they have achieved generational change in leadership and a strong future for Wayside Chapel.



# CEO/ PASTOR'S REPORT

## JON OWEN

INCOMING CEO AND  
PASTOR WAYSIDE CHAPEL

From the day its doors opened in 1964, Wayside Chapel has held a unique place in the hearts of Sydneysiders. Fifty-four years and three CEO/Pastors later our work goes from strength to strength. It is an honour to have been selected to be the fourth leader of this iconic organisation.

Firstly, a word of thanks. It is so rare in any sector for a succession to occur during a period of sustained success that is well planned out and executed. Much credit is due to my predecessor, Rev Graham Long AM, who took Wayside from the edge of bankruptcy to the position it is in today and to the Chair of the Board, Ian Martin AM, for his wisdom and foresight to ensure our future is a bright one.

The firm foundation that they and the Board have laid places us in strong position to continue to grow and thrive. Our mission is as alive as it has ever been and is needed now more than ever.

We move into the future with a strong vision and plans. Work has commenced on a strategic plan for the next three years across

all aspects of our operations encompassing programs such as our innovative Wingspan Project through to diversifying our revenue and income streams to help ensure a successful funding model.

Together we are working to create a Wayside Chapel where everyone flourishes from our visitors, through to our volunteers and staff. We have ambitious plans but we launch from a secure base. We currently employ around 110 staff, have around 600 volunteers across two sites and we will grow soon to over 130 staff. These are exciting times as we seek to continue to use the best of what we have to provide opportunities for people to be captured by the awesome and move towards health and healing.



# MISSION, VISION AND VALUES

## OUR STRATEGIC FRAMEWORK

As part of Wayside Chapel's strategic development we outlined three key focus areas enabling us to better identify moments of turning, secure the movement of our feet and foster a nimble organisation.

### Captured by the Awesome

Pulling people out of their day-to-day routine and catching them with the spark of life.

### Prophetic Voice

Calling society back to first principles to recognise that we are hard wired as social beings.

### Meeting and Moving

Removing the barriers that separate us so people can be their real selves and that moments of connection that can heal us and drive us towards health occur.

These are supported by:

- **Smart Resources:** Effective use of resources across all sections of the business.
- **Diversified Funding:** Ensuring that Wayside has a diverse range of funds to meet current and future needs of the business.
- **Developing Our People:** Investing time and effort into our paid and voluntary workforce to deliver on our commitment to the mission.
- **Innovation:** Continually improving and adopting new ways to solve old challenges.



## OUR VISION

IS 'LOVE OVER HATE'.

It is a vision that is always before us, always out there, always calling us to be more.

Our vision talks about who we want to be, and what we want to foster. We want to live on the intersection between love and hate, the intersection between faith and no faith, between the 'haves' and the 'have nots', the housed and the homeless, the sick and the well. We want to live on this intersection between love and hate, in a way that helps love prevail.



## OUR MISSION

IS CREATING COMMUNITY WITH NO 'US AND THEM'.

Wayside Chapel provides unconditional love, care and support for people on and around the streets of Kings Cross and Bondi Beach.

Wayside Chapel's stated mission is to create community with no 'us and them'. We do this by breaking down the barriers of judgement and providing a safe place where people from all walks of life are welcome just to 'be'.

Wayside Chapel draws people out of social isolation and invites them into the healing place of community. People marginalised by homelessness, mental health issues and addiction can turn to Wayside for compassion, tolerance and support.



## OUR VALUES

### OPENNESS (NO SECRETS)

We have a profoundly simple mission, which is to create a community, and our message and work are undiluted with other agendas.

### TEAMWORK (NO COWBOYS)

Our goal of creating community is also our method. We work in a collaborative way to invite people out of singular, individual life into the risky and healing place of community.

### PATIENCE (NO RUSH)

We cannot make people change. If we could, we'd be guilty of manipulation of some kind. Instead we are on the lookout for sparks of life, signs that people long for better, and we look to engage and help people move to better days and better health.

### COURAGE (NO COMPLACENCY)

It takes courage to confront people who've lost hope and invite them into the world of relationships with responsibility. Wayside is not an intensive care unit but an invitation into life and community.

### RESPECT (NO JUDGES)

People have the right to make their own decisions. People have the right to make bad decisions. People who choose singular misery or even death deserve to have their rights respected. Wayside's mission is not to fix people but to love them and be with them, knowing that if they are really met, they'll really move toward health and life.



# HIGHLIGHTS & ACHIEVEMENTS

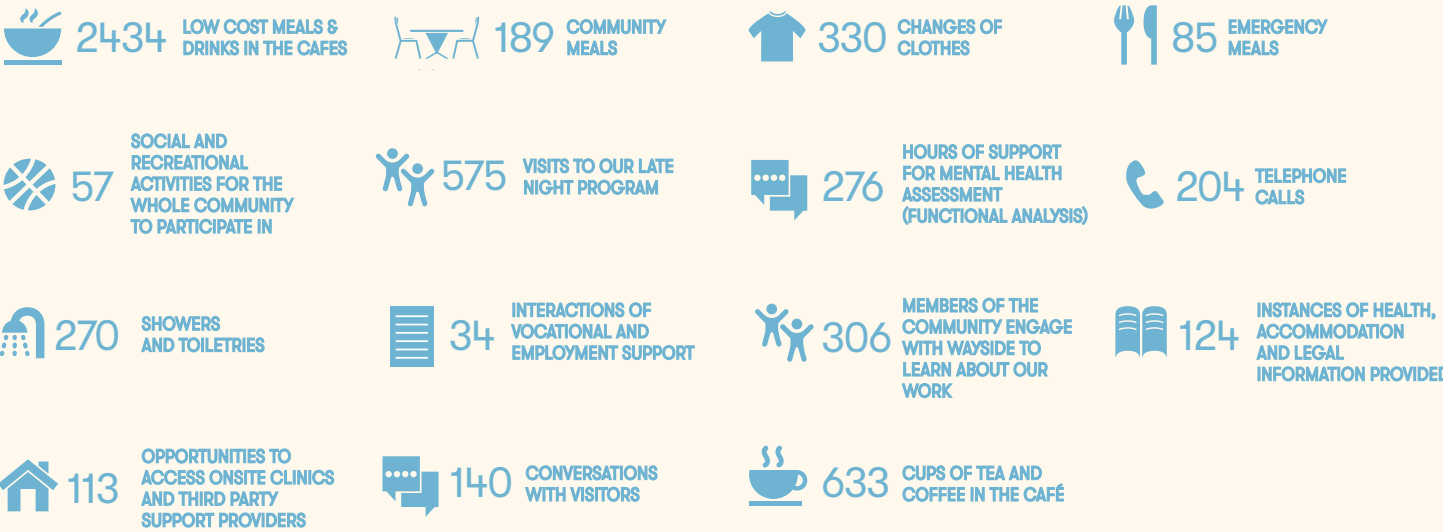
At Wayside Chapel, 2017-2018 focused on “new leadership, same mission,” as well as finding innovative ways to create social impact and growth in the community.

- This year, Rev Graham Long announced his retirement from the role of CEO/ Pastor and Jon Owen, previous Assistant Pastor at Wayside was successful in winning the role. Our community celebrated Graham's 14 years of service to Wayside and welcomed Jon with several special events. Rev Graham Long moved to the new position of “Pastor Emeritus” a grandfather role providing guidance to Jon and Wayside.
- Wayside began the much-anticipated construction on our new social enterprise, the Heart Café, set to open in November 2018. The Heart Café in Bondi Beach will serve quality food and coffee, all while supporting young people in paid hospitality traineeships. This initiative, The Wingspan Project, aims to return hope to the lives of young people and break the cycle of youth unemployment.
- Wayside Chapel launched Side by Side, an initiative bringing together leaders from the finance, education, social and government sectors, Wayside's staff, visitors and ambassadors to discuss how we combat social inequality. It would not have been possible without our sponsors – Financial Services Council, Portfolio Construction Forum, Conexus Financial and Hattonneale.
- Wayside Chapel secured two more years of funding from the NSW Government to continue our Extended Hours program. This means we will continue to be open until 10:30pm, seven nights a week, offering a safe place, access to low-cost meals, and fun and engaging activities for those in need.
- Macquarie Group Foundation held the Mad Dash, an event to fundraise and raise awareness for Wayside. Teams within Macquarie Group raced up more than 10 flights of stairs to the top of the famous Macquarie building to raise money for Wayside.
- Wayside celebrated the end of the year with a dinner at the distinguished Government House to thank ambassadors, staff and supporters. On the night, His Excellency General The Honourable David Hurley shared his experience volunteering at Wayside and Mrs Hurley led the crowd in a chorus of “You Are My Sunshine.”
- Wayside Chapel marched in the Mardi Gras 40th anniversary parade. Our entry celebrated Wayside's history with the Mardi Gras movement and our shared vision of love and acceptance. Staff, volunteers and visitors all participated and marched behind a giant pushable Wayside logo - a heart with flapping wings.
- Wayside's Community Educator Rob Holt appeared on ABC's highly acclaimed One Plus One program with Jane Hutcheon. In the powerful episode, he shared his experiences of homelessness, and how he transformed his life with Wayside.
- In NAIDOC week, we celebrated and recognised Aboriginal and Torres Strait Islander history and their contribution to society. The theme of 2017 was “Our Languages Matter” highlighting the important role language plays in Aboriginal culture. We celebrated with a variety of activities, including a very special mob lunch, where over 120 people filled our Community Hall to eat together and held Wayside's first Aboriginal Art Exhibition.
- The men and women from the Wayside sponsored team Waterloo Storm, brought the thunder to the Koori Knockout, the annual NSW Aboriginal Rugby League competition and finished fifth out of 70 teams. The team notoriously takes a strong stance against domestic violence and champions women playing rugby. In honour of the team, Wayside's first Aboriginal ambassador Elizabeth Wymarra took over Wayside Chapel's Facebook with the campaign #WaysideGoesDeadly for the entire long weekend.



- We celebrated Christmas with our annual Christmas Day Street Party, a day full of free activities including a delicious lunch, face painting, jumping castle, photo-booth and visits from both Santa and Malcolm Turnbull. Leading up to Christmas, we held our Donate-A-Plate campaign, raising money so people sleeping rough could enjoy a delicious meal on Christmas Day, surrounded by community.
- Over the last year, in our low cost cafes we have made over 50,000 more transactions than the previous year. Every transaction translates to a connection made between the volunteer behind the counter and a customer making a purchase.
- As of 2018, Wayside Chapel has reached over 110 staff, as we create new roles for our organisation and continue to expand.
- In Kings Cross we opened our very first Volunteer Hub in our Community Services Centre. The space serves as an office for our new Volunteer Coordinators as well as a place where volunteers can relax before and after a shift.
- The Pathways team had great success this year, encouraging and supporting visitors through their employment or educational paths. This year, there were nine supported employees at Wayside Chapel, previous visitors who are now employed with us. It is wonderful to see how these workers have transformed their life and now look at their future with optimism and hope.
- Day to Day Living began a fortnightly physiotherapy clinic in February in collaboration with Potts Point Physiotherapy. It was a great moment of mission to provide this new service and encourage visitors to know more about their health and wellbeing.

## IN AN AVERAGE WEEK AT WAYSIDE, WE PROVIDE:





# PROGRAMS OVERVIEW

## COMMUNITY SERVICES CENTRES



Wayside Chapel runs two Community Services Centres (CSC) in the eastern suburbs – one in Kings Cross and one in Bondi. The centres are the first point of contact for many people visiting Wayside. Our door is open for all of our community regardless of their circumstances. People can access referrals for short and long-term crisis accommodation and housing; information and advocacy services; referral services to health and welfare agencies; meeting spaces for self-help and community groups; drop-in activities; and practical day-to-day needs like showers and clean clothing. Above all, our CSCs provide a judgment-free space for those just looking for a chat, a coffee or a place where they are welcome just to 'be'. Kings Cross CSC is open 7 days a week, while Bondi CSC is open Monday to Friday.

## WAYSIDE CAFÉS

Wayside runs two low cost community cafés in both of our locations, in Kings Cross and Bondi. Both provide affordable meals and beverages in a warm, relaxed and friendly environment. The cafés are the busiest and liveliest part of Wayside, with people from all walks of life coming together for a meal, a coffee or simply to spend time in a safe place. While the meals are not free, they are extremely affordable, hearty and nutritiously balanced. Anyone from the community is welcome to come, relax, enjoy a meal and see what Wayside is all about. Kings Cross café is open 7 days a week, while Bondi café is open Monday to Friday.

## THE WINGSPAN PROJECT

The Wingspan Project is a training and employment initiative that helps disadvantaged young people take control of their lives. Based in Bondi Beach, we use one-on-one support to empower young people to improve their physical and mental wellbeing, foster stronger relationships with their networks and progress their lives through training and/or employment. The Wingspan Project, which starts in November 2018 will be making a long-term investment in every young person by giving them training and employment support for six to 24 months. It is connected to Wayside's new social enterprise café, the Heart Café that will serve quality food and coffee in the heart of Bondi Beach.

## DAY TO DAY LIVING

The Day to Day Living (D2DL) Program provides people living with long-term mental health issues with a safe and supportive environment. The program aims to support people experiencing social isolation, and help them increase community participation, develop confidence and new skills, accomplish personal goals, and improve their quality of life. Through a range of educational, social and recreational group-based activities, participants are encouraged to seek out their vocation, discern what 'recovery' means for them and focus on making their future dreams a reality by creating opportunities for themselves. Day to Day Living also offers supports from the National Disability Insurance Scheme (NDIS), helping those with physical, intellectual disabilities and mental health issues.



## THE CHAPEL

The Wayside Chapel Kings Cross and The Wayside Chapel Bondi are examples of community at its finest, with people from all walks of life coming together for Sunday services. Led by Jon Owen in Kings Cross and Rev Graham Anson in Bondi, Wayside church services are something a little bit different, bringing the words of the Lord into a modern context and a community atmosphere. The sermons touch on everything from grief, addiction and despair to love, hope and renewal. The congregation enjoys each other's company every Sunday and are reminded that all of religion is satisfied when love is lived in community.

## ABORIGINAL PROGRAM

The Aboriginal Program brings the Indigenous community at Wayside together in a way that is culturally sensitive, respectful and appropriate. Our Aboriginal Program Workers engage and support Aboriginal visitors and tailor the project to the needs of the Aboriginal community. The Aboriginal Program offers a structured series of activities including a weekly community lunch, a living skills program and art activities. A series of support programs assist Aboriginal visitors through various pathways including education, employment and referral out of disadvantaged areas. The dedicated Aboriginal space at Wayside enables the Indigenous community to feel a sense of belonging and create their own cultural community.



## WAYSIDE GARDENS

Wayside Chapel has two community gardens in Kings Cross and Bondi. In Kings Cross, we have a 200m square metre rooftop garden filled with over 50 different varieties of organic fruit, herbs and vegetables. It has rainwater tanks, solar panels, worm farms, a compost system and bee-hives. Our Bondi garden is in full view of the kitchen and café and these three parts work in synergy with each other. The organic produce grown in our gardens is used at both cafes, as well as featuring in local restaurants like Billy Kwong in Potts Point. The gardens now have a stronger focus on Indigenous plants, native saltbush, lemon myrtle and more. The wider purpose of the gardens is to create community, teach living skills, practise sustainability, engage with our neighbours and beautify the space.



## OP SHOPS

Packed to the rafters with clothes, jewellery and kitsch delights, Wayside Op Shops are a favourite of fashionistas looking for quirky one-offs and affordable designs. Zimmerman, Armani, Sass & Bide – donated by some of Wayside's very well dressed supporters – nestled amongst humbler brand names and handmade items. Wayside is now managing two Op Shops in the Eastern Suburbs, our newer store in North Bondi and our flagship store in Kings Cross. Not only does this allow more space to house all our great stock, it also means more opportunities for sales and increased revenue for Wayside. Our Op Shops generate significant profit for Wayside, which is directed straight back into our program areas to help the most vulnerable members of our community. Patrons of Wayside's Op Shops also know they are 'shopping for good' by buying second-hand, supporting the local community and minimising their environmental footprint.

## TWILIGHT PROGRAM

The Twilight Program offers fun and interesting activities from 5pm to 10:30pm, a time that can be quite lonely for people sleeping rough or who have a limited network of friends and family. The Twilight team runs a range of activities, including movie nights; bingo and games nights; photography; music; drama; arts and crafts; and pamper sessions. In addition to activities, the Twilight team provides a safe place for people to spend the evening and access essential

services such as showers, emergency clothing and access to telephone facilities. The Wayside cafe also forms part of the Twilight Program and features low-cost, healthy and freshly-cooked meals. Alongside this program, assessment and support are provided for people who are homeless through care coordination. The Twilight Program has been instrumental in the rolling out of our Extended Hours program, where funding was granted to extend our opening hours to help more people later into the night.

## PATHWAYS PROJECT

When the people we support get back on their feet, the first thing they often want to do is find a vocation that brings meaning to their life. The Pathways Project offers support to people across all program areas at Wayside, whether they're interested in working, studying, or just learning a new skill. Our Pathways Project Officers work with each visitor individually, assessing their vocational goals and developing a unique pathways plan to help building skills toward those goals. It enables our visitors to prioritise their hopes and dreams for the future, and find vocational activities to improve their quality of life. We also work with a range of external partners like Centrelink and employment agencies to bring a more complete set of pathways services to Wayside. Wayside is proud to have employed a significant percentage of supported workers.





STORIES from the Wayside



“ When I first came to Wayside when I was younger, I was heaps scared. I'd go in to have a shower then go straight back out. As the years went by, the workers started making me feel at ease, and now, it's like home. I got pushed from place-to-place and service-to-service, but Wayside cemented me and helped me. I'm looking to get more involved. I've already enrolled and next year I start studying Youth Work at Sydney TAFE and hoping one day I can get a job at Wayside. ”

Dale



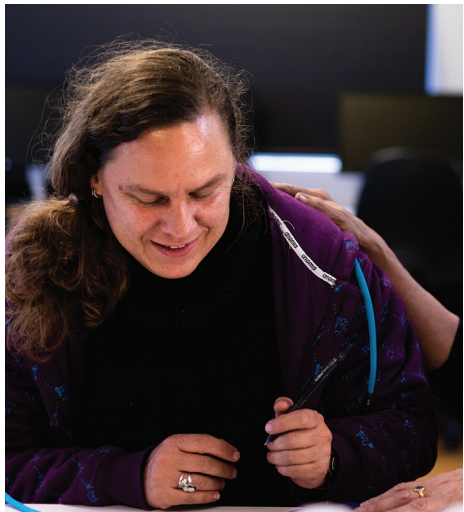
“ When I was at Wayside for a corporate volunteering day, I met Rob Holt, Wayside's Community Educator. As a fellow South African when he said “Love took over his Hate”, on behalf of my ugly, black, vilified, ignored, opportunity-missed, name-called, couldn't-pee-in-a-toilet-because-it-was-for-whites, “non-white” self, I felt deeply honoured and respected by who he now is. His willingness to face his own pain and sadness healed me. What Love over Hate does, what Rob does, is give us a new legacy, a new platform to stand on.”

Lyle



“ This year, I started as a Gardening Assistant to Jon, the Community Gardener. Gardening makes me feel well, physically and mentally, I even love touching and smelling the dirt as it makes me feel well. When I first came to Wayside, I thought I was going to help Jon out but it turned out he's helped me much more. I was living in hell and this garden is heaven, it is the Garden of Eden. It's good for me. Jon and gardening saved my life. ”

Margie



“ What Wayside has given to me over the last 20 years is stability. I've been studying art a while, got two diplomas and now I'm going to get my degree with the help of Wayside. Now, I teach art at Wayside on Monday's at Bondi CSC. The people there are always eager to learn and very grateful.”

Danielle



“ I first came to Wayside three months ago in search of a drop-in centre and safe space. I started coming here almost every week, doing activities with Day to Day Living and attending Community Lunch – which I like because it's real food, not junk. I like it here, especially because of the staff, they're really nice people. ”

Geoff



“ Where I live, it's very boring and lonely. I come to Wayside to be around people. I like the free breakfast, the very reasonable lunches, I like the computers as I can't get internet where I live. But it's mostly the people I come for – the staff, vollies and other visitors, they're good people. It's somewhere good to go. ”

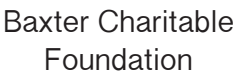
Robin



The taste the world loves!®

GENEROSITY

Wayside Chapel would like to thank all our partners who support us in the important work that we do.



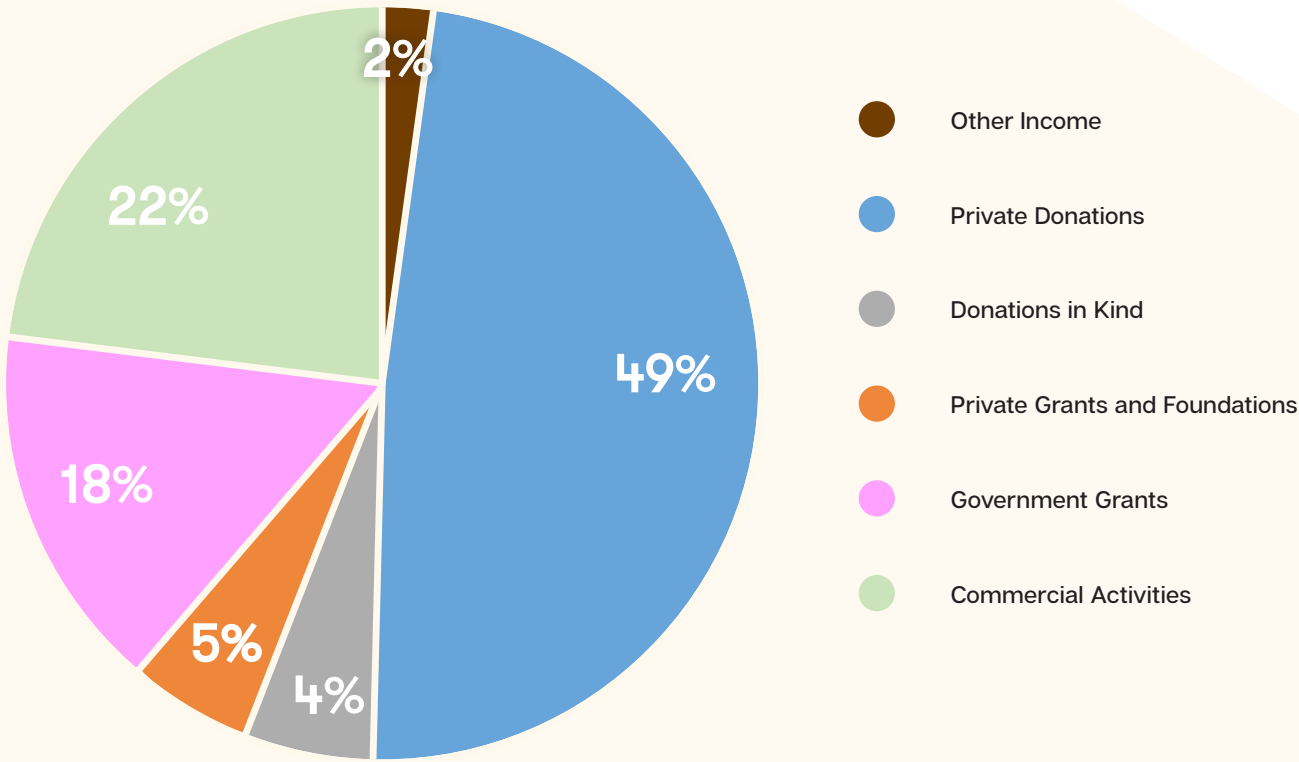


# FINANCIAL REPORT

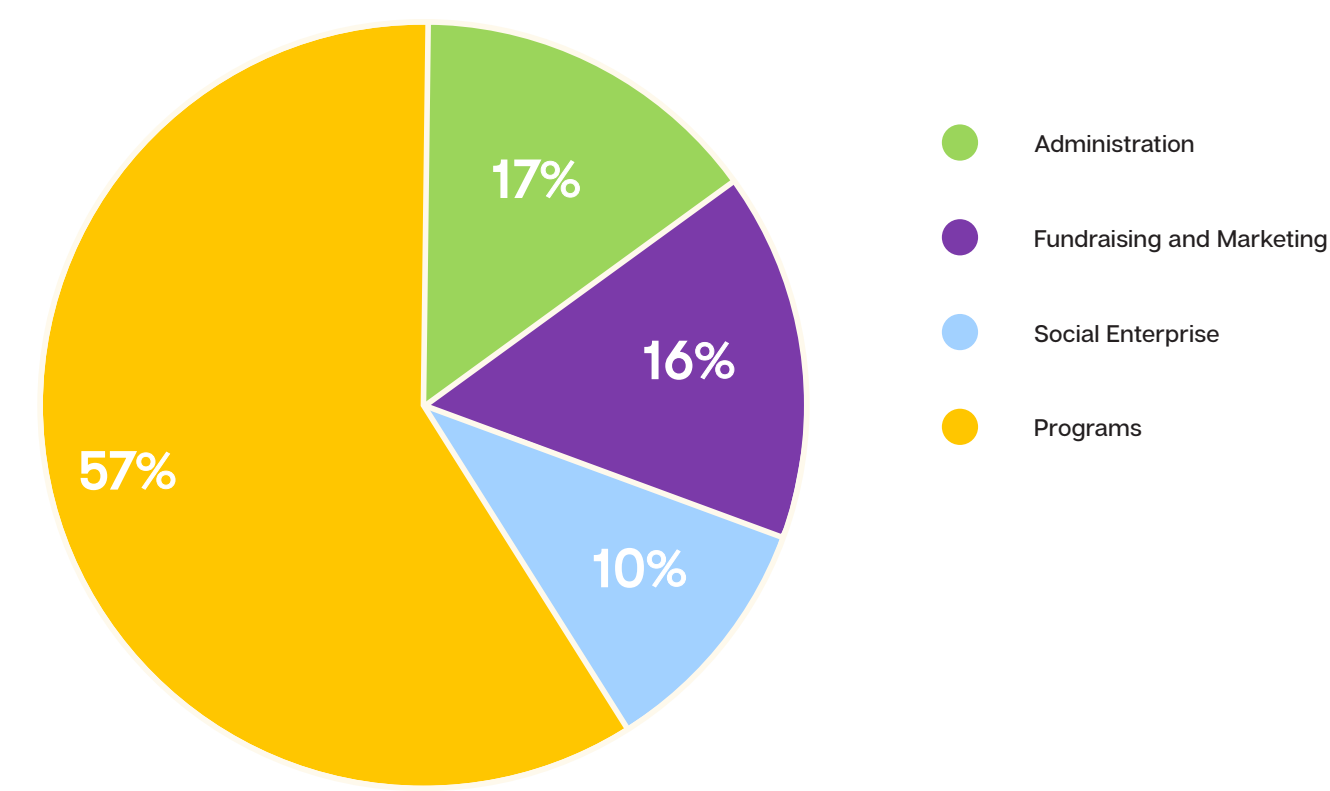
Through the continued generous support of the community, Wayside experienced strong growth in 2017-18.

INCOME STATEMENT	2017-2018 \$'000	2016-2017 \$'000	2015-2016 \$'000
REVENUE	8,099	6,843	5,325
EXPENSES	7,846	6,267	5,315
NET SURPLUS \$	253	576	10
NET SURPLUS %	3.13%	8.42%	0.19%

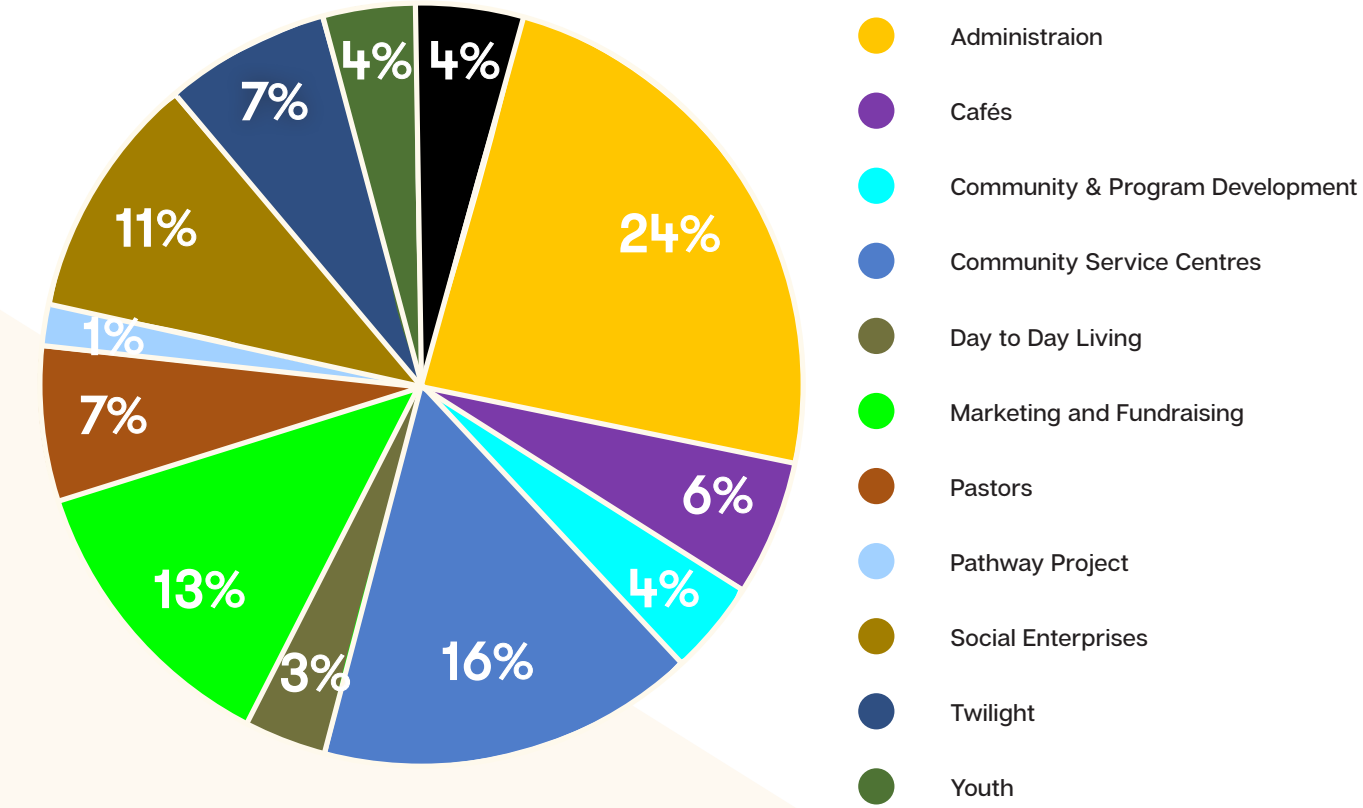
REVENUE BY FUNDING SOURCE



WHERE DO WAYSIDE'S EXPENSES GO?



WAYSIDE STAFF COSTS BY PROGRAM





# THANK YOU

Wayside Chapel would like to thank all of the individuals, groups and businesses that support us in the important work that we do.



29 Hughes Street, Potts Point NSW 2011  
77 & 95 Roscoe Street, Bondi Beach NSW 2026  
mail@thewaysidechapel.com 02 9581 9100  
www.waysidechapel.org.au

Photos by Katherine Williams